

# Recreation Opportunity Guide

Morrell Falls Trail #30

## HIKING

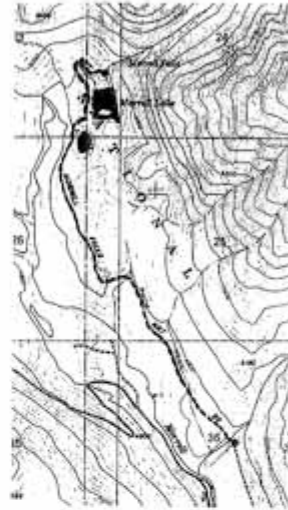


Forest Service  
Lolo National Forest  
Seeley Lake Ranger District

UPPER CLEARWATER VALLEY AREA

### MORRELL FALLS NATIONAL RECREATION TRAIL #30

- Trail Beginning: 4705 ft. elevation  
End of Forest Rd. #4364
- Trail Ending: 4840 ft. elevation  
Morrell Falls
- Trail Length: Approximately 2.5 miles (One Way)
- Season of Use: Late Spring/Summer/Fall
- Usage Rate: High
- Difficulty: Easy
- Reference Maps: Lolo National Forest Visitor Map - Seeley Lake  
USGS Topographic Quadrangle - Morrell Lake
- Map Location: Section 36 T18N R15W
- Lake Size: Morrell Lake - 26 acres - 4825 ft. elevation



#### NARRATIVE

This is one of the most popular trails on the Seeley Lake Ranger District. The trail is predominantly used by day hikers, although bicyclists and stock users frequent the trail as well. The trail is CLOSED to motorized vehicles, except for snowmobiles after December 1 for each winter season.

The initial portion of the trail is located through a lodgepole pine flat. The remainder passes through a mixed forest of pine, fir, larch and spruce. The drainages in this area support a variety of wildlife including: beaver, bobcat, bear, elk, deer, mountain lion and moose.

Morrell Lake is located approximately 2.3 miles from the trailhead. Morrell Falls, located past the northeast corner of the lake, marks the end of the trail. At this point, Morrell Creek cascades down a spectacular 90-foot double falls. A short, steep climb provides a rewarding view of the falls from above. There is an old hunter/trapper's trail which intersects the Morrell Falls trail near the base of the falls and heads north into the Grizzly Basin area. This Grizzly Basin Trail #409 is unmaintained and can be difficult to follow. The trail does afford a different type of opportunity for those seeking more natural and remote experiences.

#### ATTRACTIONS & CONSIDERATIONS

This 5 mile round trip hike leads to Morrell Lake and beautiful Morrell Falls at the base of the Swan Mountain Range. There is adequate parking & several dispersed campsites located at the trailhead and near Morrell Lake. An outdoor toilet is also provided at the trailhead. No developed water source is available.

#### REMINDERS

- Visitors are reminded to practice **Leave No Trace Camping** techniques in this fragile country.

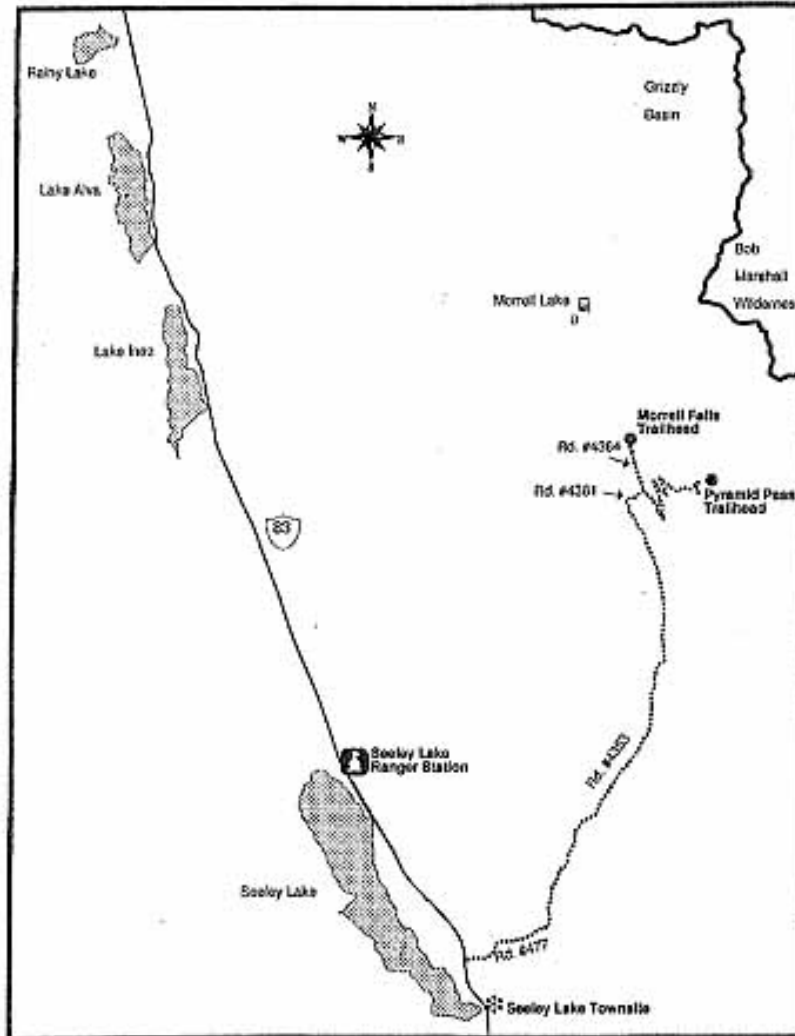
We hope you enjoy your experience in the wild! If you would like further information, contact the Seeley Lake Ranger District at (406)677-2233, located three miles north of the town of Seeley Lake on Montana Highway 83.

# Recreation Opportunity Guide

## Morrell Falls Trail #30

### ●●● ACCESS ROUTE TO TRAILHEAD

Travel North of Seeley Lake (town) .5 miles on Highway 83, turn East (right) on Morrell Creek Road (small green street sign) which becomes Forest Road #477 Cottonwood Lakes Road, and go 1.1 miles. Turn North (left) on West Morrell Road #4353, travel about 6 miles. Turn East (right) on Pyramid Pass Road #4381, go .25 miles. Then turn North (left) on Morrell Falls Road #4364, continue travel for 1 mile to the Morrell Falls Trailhead and parking area.



- ✓ This is **BEAR COUNTRY!** A special order, designed to minimize grizzly bear/human conflicts, has been issued by the Flathead, Helena, Lewis & Clark, and Lolo National Forests.  
**All food & beverages** (including canned food, pop and beer), **grease, garbage, livestock and pet food** (except hay and water), and **scented or flavored toiletries must be made unavailable to bears when your camp or picnic site is unattended.**  
Your options for storage are:
  - 1) Store in a hard-sided camper, vehicle trunk or car;
  - 2) Hang attractants at least 10 feet off the ground and 4 feet away from any vertical support;
  - 3) Store in a certified bear resistant container. (Coolers, pop-up campers, tents, backpacks and plastic boxes are NOT considered resistant.
  
- ✓ To prevent the spread of noxious weeds, on all National Forest System Lands within the State of Montana: All hay, grain, straw, cubes, pelletized feed or mulch must be certified as being noxious weed free or noxious weed seed free.